

DAYLIGHTING PROJECT PROFILE

LION BREWERY

COLOMBO, SRI LANKA – July 2011



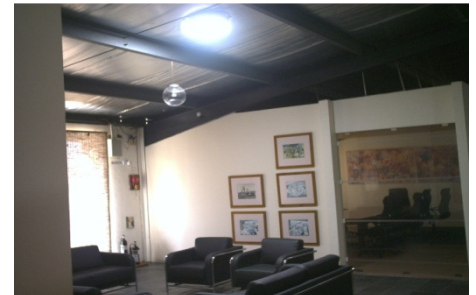
Customer – Lion Brewery, Sri Lanka's largest brewery and most popular beer brand, distributed worldwide.

Objective – To daylight several areas of 2nd floor office space using Solatube tubular skylights.

Roof type – Pitched metal sheet, and several inches of interior insulation.

Materials installed – 30 units of Solatube Solamaster 21" diameter open-ceiling tubular skylights.

Photos:



Lion wished to have daylit offices to improve worker morale and productivity. With thick ceiling insulation, traditional skylights would require large aperture of the roof & removal of insulation. By delivering large amounts of light through small apertures (up to 22,000 lumens per 21 inch unit), Solatube can deliver more light than traditional skylights with much less removal of ceiling insulation, maintaining protection from solar heat gain.

Even on a cloudy day, the Solatube tubular skylights deliver enough daylight to displace electrical lighting. The customer is very satisfied with the quality of light, energy reduction and heat reduction.

Product Manufacturer – *Solatube International Inc* Vista CA USA

Product Supplier – *Silvermere International Group, Lighting Division* St. Paul MN USA

Product Installer – *Island Green Energy Solutions* Colombo Sri Lanka

For enquiries please contact: ryan@silvermeregroup.com

www.silvermereinternational.com

Raise Your Standard of Lighting!